

YOU Can Stop the Spread of Invasive Species!



From farm to forests to suburbs, invasive species impact everyone. Invasive species are non-native to an ecosystem and can be plants, animals, and other organisms. Invasive species can spread quickly because their new location lacks natural predators, affecting the environment and native species in many different ways, including:



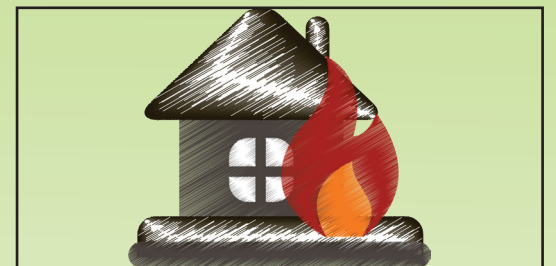
Reduction of Biodiversity

Invasive species compete with native plants and animals for limited resources.



Drop in Land Value

Invasive weeds in pastures and farmland cost an estimated \$33 billion per year nationwide.



Increased Chance of Wildfire

Invasive ornamentals (such as pampasgrass and eucalyptus) increase the chance of fire and are too dangerous near homes.

This is where **YOU** come in!

The first step is to be aware of the pests that may be a threat in your area, so you know what to look for and report. Below are a few ways you can help to minimize the impact of invasive species:



Planning a move?

Find and remove egg masses and insects from outdoor items moving with you (i.e. grills, patio furniture, bicycles, scooters, etc.) to protect your new community.



Camping? Don't Move Firewood!

Some pests target trees and wood. **Buy certified, heat-treated firewood or responsibly gather wood at your destination.**



Traveling?

Clean your vehicle first! Check wheel wells, bumpers and other hard-to-see areas to ensure they are free of soil, egg masses and insects.



Vacationing in an exotic locale?

Don't bring plants, wood or fruits and vegetables home with you! The U.S. prohibits many of these items from entering the country since they may harbor unwelcome invasive pests.



Know Your Invasives!

Contact your local U.S. Department of Agriculture Animal and Plant Health Inspection Service office for more information on which species may be in your area to **avoid unintentional spreading to other locations.**



Go native!

When buying plants for your home garden, ask your nursery about non-invasive plant alternatives. Native plants often have similar landscaping characteristics as invasives, without the potential for ecosystem damage.

